



Instruction

Create V60 service file

1 Open the V60 service menu

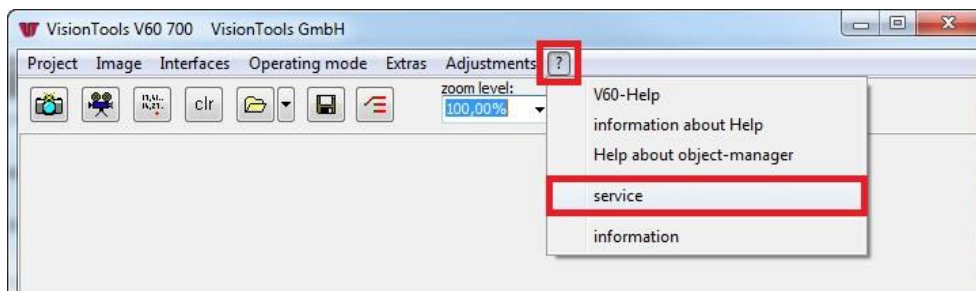


NOTE!

The Service menu is used to save important project data for the VisionTools Service, and is integrated above the V60 Version **V7.152.001**.

If you have any problems or questions, the VisionTools operating manual at your station may provide helpful information. Otherwise, you can contact our service office Monday through Friday (except for holidays) from 08:00 AM to 4:00 PM by e-mail or telephone.

Click "?" » "Service" on the menu bar in V60 to open the Service menu:



The following information is available in the menu:



- Version:** Version number for the installed V60 version.
- License number:** License number included on the inserted dongle (silver USB stick).
- Project number:** VisionTools project number (only visible if entered)
- Station name:** Station name (only visible if entered)
- E-mail:** E-mail address for VisionTools service.
- Website:** Domain for the VisionTools homepage.
- Tel:** Telephone number for VisionTools service.
- Buttons:** For an explanation of the two buttons, see the following section.

2 Project-related files



Click the button to open the "Edit V60 Service Information" menu to add / insert pre-defined files:

modify V60 service information

project number: SMD-QUI-16-8741

station name: AQR01020223

project related files for service file

path	name		current file/path	
PRD load path +	- string -	Justagebilder	Folder: D:\Projekt\Justagebilder	...
PRD load path +	- string -	Kalibrierbilder	Folder: D:\Projekt\Kalibrierbilder	...
PRD load path +	- string -	Referenzbilder	Folder: D:\Projekt\Referenzbilder	...
PRD load path +	- string -	Parameter	Folder: D:\Projekt\Parameter	...

add insert copy delete

OK Cancel

current selection: 49 MB
number of files found: 19



NOTE!

Pre-defined files are created in V60 set-up mode.

Project-related files for the service file

Click the "Add" or "Insert" button to add a new line to select files or a path. Click on the [...] button to select a file or a path. Depending on the project, the following selection of important folders on the computer will be available:

Example folders:

- Adjustment images
- Calibration images
- Reference images
- Parameters
- Values lists



NOTE!

Folder names may differ from the examples.



NOTE!

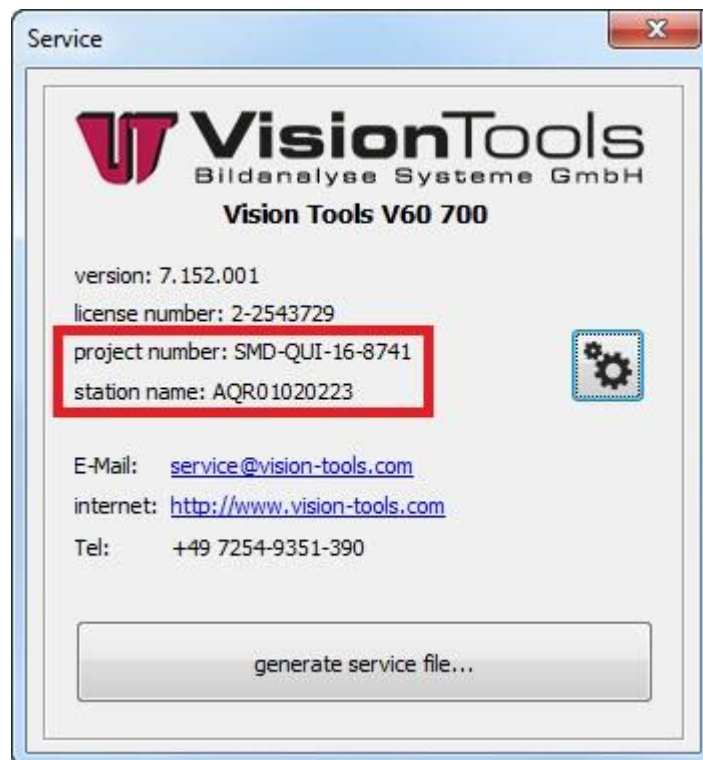
The project file (PRF) and image collections are not added in this menu.
More information is provided in the following section.

Size and number of files

The number and size of all inserted project-related files are updated and visualised after each added file.

Project information

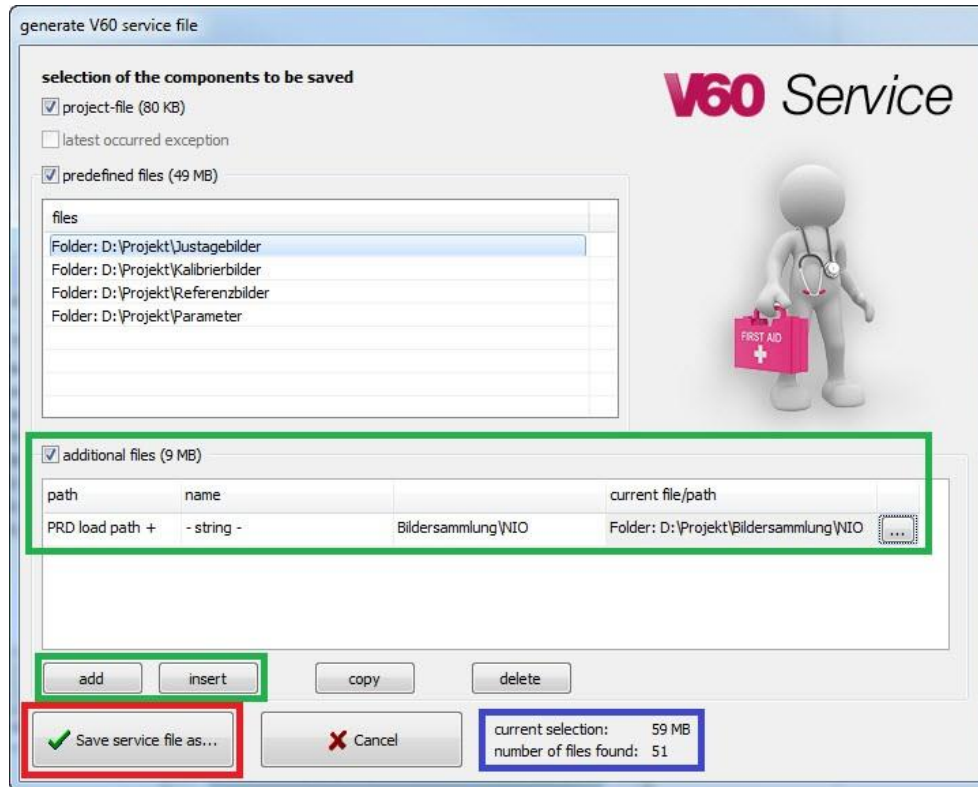
The project number and station name entered here are visualised in the service menu and saved after creating the service file.



3 Create V60 service file



Click the button to open the "Create V60 Service File" menu:



Select the components to be saved

Check the box beside *Project file* to save the currently loaded project file (PRF) when creating the service file.

In addition, the pre-defined files will also be visible. Checking the box will also save these files.

Additional files

Click the "Add" or "Insert" button to add a new line to select additional files or a path. Click on the [...] button to select a file or a path. Enter the path of the NOK image collection to optimise here, for example. Note the size of the folder or the files.

Size and number of files

The total number and size of all added files, including the project file (PRF) will be updated and visualised after each additional added file.

Save service file under ...

Once you have added all necessary files, click the "Save service file under..." button to create the service file (.zip) .

The created file will include the added documents as well as other important information such as the installed drivers and IP addresses.

